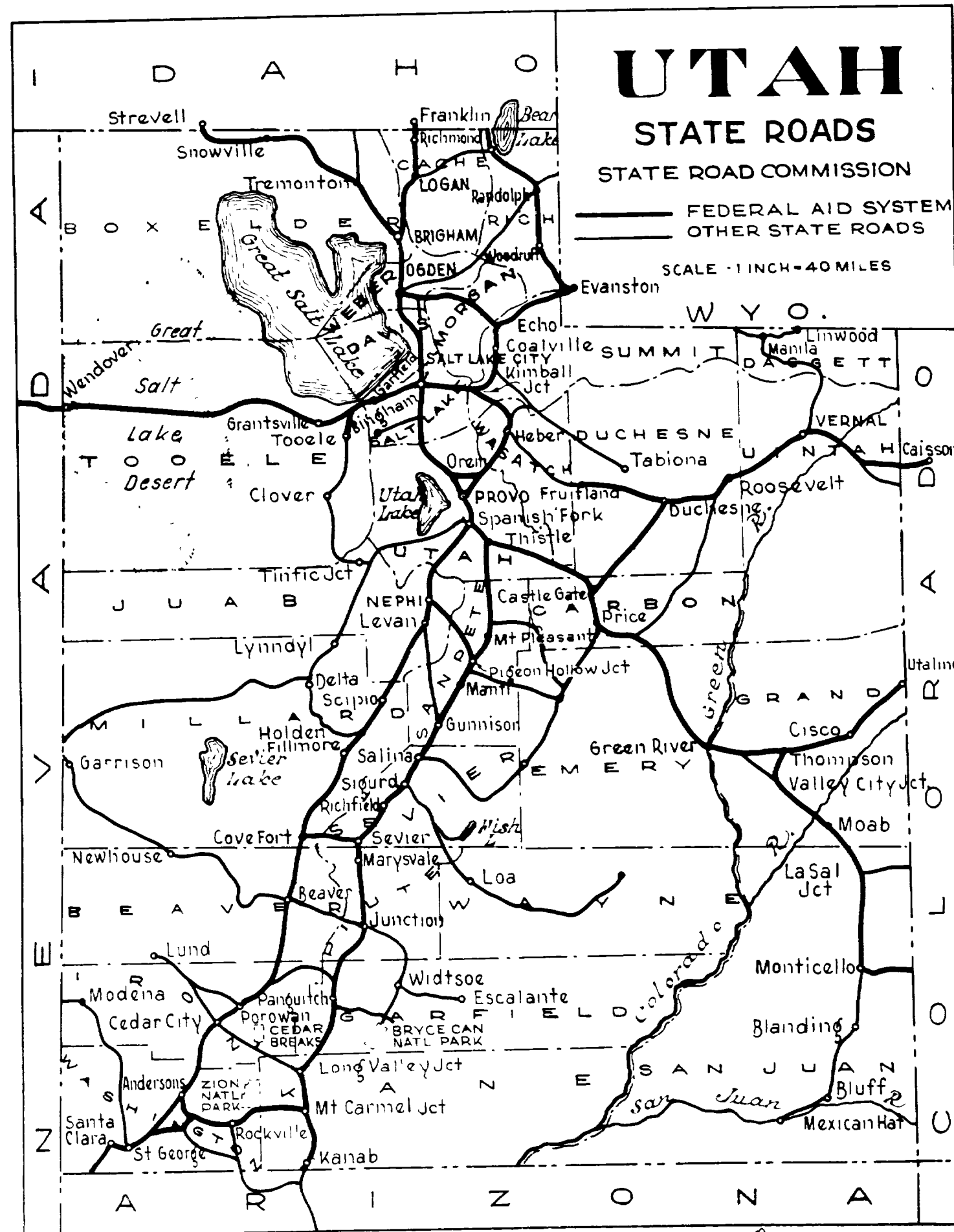


# STATE OF UTAH STATE ROAD COMMISSION

FED. ROAD DIST. NO.	STATE	FED. AID PROJ. NO.	FISCAL YEAR	SHEET NO.	TOTAL SHEETS
12	UTAH	E 125 A	1932	1	1
12	UTAH	N.R.M. 125-B	1933	1	7
12	UTAH	N.R.M. 125-C	1935	1	8
12	UTAH	W.P.M.H. 62-F	1936	1	7
12	UTAH	125-C	1936	1	6
12	UTAH	F.A.P. 62-F	1937	1	2
12	UTAH	F.A.P. 62-G	1937	1	7
12	UTAH	F.A.P. 125-C	1937	1	2



## PLANS OF PROPOSED STATE ROAD FEDERAL AID PROJECT WEBER COUNTY

**Sec. A Ogden - North Ogden - Length 2.660 Miles**

N.R.M.P. No. 125-B - Grant Ave, Ogden - Length 0.850 Miles

U.S.R.W.P. No. N.R.M. 125-C (1935) - North Washington Ave, Ogden - Length 2.575 Miles

**U.S.W.P.H.P. No. W.P.M.H. 62-F LENGTH 1.417 MILES**

**U.S.W.P.H.P. No. W.P.M.H. 125-C LENGTH 1.762 MILES**

**F.A.P. No. 125-C LENGTH 2.575 MILES**

**F.A.P. No. 62-F LENGTH 1.417 MILES**

**F.A.P. No. 62-G LENGTH 0.726 MILES**

Scales { Plan 1" = 100'  
Profile { Horizontal 1" = 100'  
Vertical 1" = 10'

### INDEX TO SHEETS N.R.M.P. No. 125-C

SHEET No.	DESCRIPTION	DRAWING No.	STATION
1	Title Sheet		
2	Typical Section	Type "Spl"	
3-7	Plan and Profile		
8A	F.A.P. & R. of W Markers	J-391 R	

### INDEX TO SHEETS F.A.P. No. 125-A

SHEET No.	DESCRIPTION	DRAWING No.	STATION
1	Title Sheet		
2	Typical Section	Type "Spl"	
3-7	Plan and Profile		
8	7'-2" x 6" Conc. Box (Extend 16 ft)	E-397	13+36.6
9	2'-2" x 5'-8" Conc. Box	E-163-L19	Various
10	3'-2" x 5'-6" Conc. Box	E-164-L17	112+86
11A	F.A.P. and R/W Markers	J-391-R	
11-B	Cross Section		

### INDEX TO SHEETS N.R.M.P. No. 125-B

SHEET No.	DESCRIPTION	DRAWING No.	STATION
1	Title Sheet		
2	Typical Section	Type "Spl"	
3-5	Plan & Profile		
6	Ogden City Standard, 18"x10" Conc. Culv.	E-409	Various
7-A	N.R.M. Markers	J-391-R	

### INDEX TO SHEETS F.A.P. No. 62-G

SHEET	DESCRIPTION	DWG.	STA.
1	Title Sheet		
2-2A	Typical Section		
3-6	Plan and Profile		
7A	F.A.P. and R. of W Mkrs	J-391-R	

### INDEX TO SHEETS F.A.P. No. 62-F

SHEET	DESCRIPTION	DWG.	STA.
1	Title Sheet		
2-2A	Typical Section		

### INDEX TO SHEETS F.A.P. No. 125-C

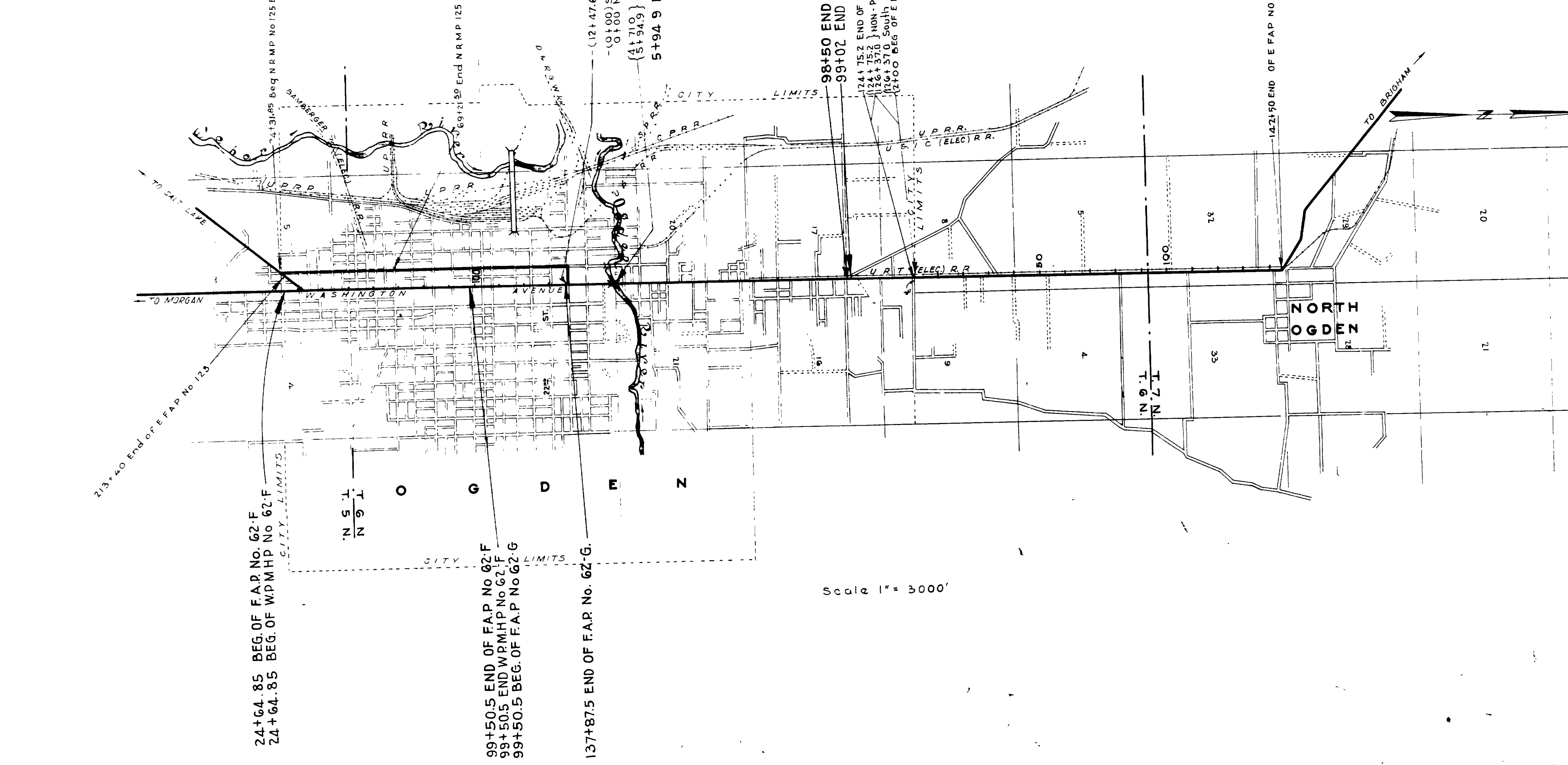
SHEET	DESCRIPTION	DWG.	STA.
1	Title Sheet		
2-2A	Typical Section		

### INDEX TO SHEETS W.P.M.H.P. NO. 62 F

SHEET	DESCRIPTION	DRAWING	STATION
1	Title Sheet		
2	Typical Section		
3-7	Plan and Profile		

### INDEX TO SHEETS W.P.M.H.P. No. 125-C

SHEET	DESCRIPTION	DRAWING	STATION
1	Title Sheet		
2	Typical Section		
3-6	Plan and Profile		



APPROVED 3 Sept 1932  
STATE ROAD COMMISSION OF UTAH

*Henry H. Flood*  
CHAIRMAN

*Preston Peterson*  
MEMBER

*W. J. Parker*  
MEMBER

*[Signature]*  
CHIEF ENGINEER

RECOMMENDED FOR APPROVAL

RECOMMENDED FOR APPROVAL

APPROVED

DIRECTOR BUREAU PUBLIC ROADS





